

## **Technical Report: September 2018 CHRL ELE**

---

**Human Resources Professionals Association**

12 October 2018



# Contents

<b>Executive Summary</b> .....	<b>5</b>
<b>Administration</b> .....	<b>6</b>
Form Setting .....	6
Testing Window .....	7
<b>Analysis</b> .....	<b>8</b>
Data Cleaning and Integrity Checks.....	8
Post-Examination Survey.....	10
Initial Analysis .....	13
Key Validation.....	13
Establishing the Pass Mark: Equating.....	15
Scoring .....	21
<b>Key Examination Metrics</b> .....	<b>23</b>
<b>Related Development Activities</b> .....	<b>24</b>
<b>Appendix</b> .....	<b>25</b>

## List of Tables

Table 1: Domain fit at administration .....	6
Table 2: Cognitive level fit at administration .....	7
Table 3: Administration-related post-examination survey questions* .....	11
Table 4: Content-related post-examination survey questions* .....	11
Table 5: Preference regarding independent and case-based items.....	12
Table 6: Preference regarding number of response options .....	12
Table 7: Preference regarding computer-based testing versus pencil-and-paper .....	12
Table 8: Value of access to legislation .....	12
Table 9: Initial examination statistics .....	13
Table 10: CHRL Examination Validation Committee – Key validation .....	14
Table 11: Domain fit for final scored items .....	15
Table 12: Cognitive level fit for final scored items.....	15
Table 13: Item type fit for final scored items .....	15
Table 14: Anchor item fit to blueprint.....	16
Table 15: Equating parameter table .....	17
Table 16: Equating outcome table.....	17
Table 17: Anchor item fit to blueprint.....	18
Table 18: Equating parameter table .....	19
Table 19: Equating outcome table.....	19
Table 20: Equating outcome table – Combined results .....	20
Table 21: Historical pass rates .....	21
Table 22: CHRL Examination Validation Committee – Pass mark approval .....	21
Table 23: Total and domain scores for all candidates.....	22
Table 24: Correlations between functional area scores for all candidates .....	22
Table 25: Key examination metrics – Candidates included in analysis only.....	23
Table 26: Employment Law Examination Blueprint Structural Variables.....	25
Table 27: Employment Law Examination Blueprint Content Weights .....	27
Table 28: CHRL Employment Law Examination Blueprint Cognitive Level Weights .....	28

## List of Figures

Figure 1: Examination time distribution for all candidates.....	9
Figure 2: Candidate volume and score trends across testing window .....	9
Figure 3: Score distribution for all candidates.....	22

# Executive Summary<sup>1</sup>

*Note that this technical report covers only the primary new form or forms administered during an administration, and not detailed results for all forms used (which may include previously used forms, scrambled forms, and other modifications to maintain exam and score integrity).*

The CHRL Employment Law Exam (CHRL ELE) was administered to 195 candidates using computer-based testing at Prometric test centres September 17–October 1, 2018, inclusive. The examination comprised 110 three-option multiple choice items and had a 3½-hour time limit.

As per the CHRL ELE blueprint, the exam was scored using the 98–102 best-performing items (while adhering to the prescribed distribution across topics). The mean score for first-time candidates ( $n=166^2$ ) was 73.4 (74.2%), and for all candidates it was 72.5 (73.2%), out of 99 validated items for scoring. Reliability was acceptable at .75 (noting that there is substantial range restriction with these candidates). The final set of scored items adhered to the blueprint parameters.

The pass mark was set using equating back to the January and May 2018 administrations, yielding an integer pass mark of 64. Equating was conducted to compensate for minor changes in exam form difficulty so that any given candidate has an equivalent hurdle regardless of when they write the CHRL ELE. This pass mark resulted in a pass rate for first-time candidates of 87.3% and a pass rate for all candidates of 85.6%.

This report, the analyses performed, and the processes followed are consistent with NCCA standards<sup>3</sup> and ISO 17024 standards.<sup>4</sup>

---

<sup>1</sup> This technical report is an abbreviated version of the full report. Information has been excluded that if known to candidates could negatively affect the validity of future candidate test score interpretations. This includes item-level statistics, some information about the construction of test forms, and some specific details concerning equating.

<sup>2</sup> Excludes those who had failed an HRPAs employment law examination in the past, who were identified as being statistical outliers, or who had written an alternative test form.

<sup>3</sup> National Commission for Certifying Agencies (2014). *Standards for the accreditation of certification programs*. Washington, DC: Institute for Credentialing Excellence.

<sup>4</sup> International Organization for Standardization (2012). *ISO/IEC 17024:2012 Conformity assessment – General requirements for bodies operating certification of persons*. Geneva: International Organization for Standardization.

# Administration

## Form Setting

Using only validated test items, Wickett Measurement Systems prepared one 110-item test form. Wickett constructed the final test form according to the following parameters:

1. Including only items validated by the validation panel in the past 2 years
2. Fitting the total item count of 110
3. Excluding enemy items
4. Matching the blueprint weights
5. Maximizing spread across subtopics as per the blueprint weights
6. Reducing item exposure
7. Selecting items with perceived psychometric effectiveness, using statistics from previous administrations as available

The final form was reviewed for currency and enemy items by Jennifer King and Annette Dhanasar (CHRL Examination Validation Committee members) in a remote session held June 29, 2018.

The final form composition for the September 2018 CHRL ELE is shown in Table 1 (domain weighting) and Table 2 (cognitive level weighting). The form reflected the examination blueprint (see Appendix for full CHRL ELE blueprint).

Note that at any administration, HRPAs make use of previously validated and administered test forms along with new test forms, in addition to employing other mechanisms to maintain the integrity of the exams and candidate scores.

**Table 1: Domain fit at administration**

	<b>Domain</b>	<b>Actual Items</b>	<b>Target Range</b>	<b>Target Items</b>	<b>Variance</b>
<b>A</b>	Employment Contracts and Terminations	49	46% ± 5%	46–56	—
<b>B</b>	Employer Obligations	37	33% ± 4%	32–40	—
<b>C</b>	Regulations and Legislation	24	21% ± 3%	20–26	—
	<b>TOTAL</b>	<b>110</b>		<b>110</b>	<b>—</b>

Table 2: Cognitive level fit at administration

Cognitive Level	Actual Items	Target Range	Target Items	Variance
Knowledge	11	10% ± 3%	8–14	—
Application	53	50% ± 10%	44–66	—
Critical thinking	46	40% ± 10%	33–55	—
<b>TOTAL</b>	<b>110</b>		<b>110</b>	<b>—</b>

The test form adhered to the blueprint for content domain and cognitive level.

## Testing Window

The examination was administered via computer-based testing at Prometric test sites primarily in Ontario. The testing window was September 17–October 1, 2018, inclusive, and 195 candidates wrote the exam.

Candidates had access to a basic-function calculator on screen and access via PDF to 10 pieces of searchable legislation (compiled into 2 documents):

### *Provincial*

- AODA – *Accessibility for Ontarians with Disabilities Act, 2005*
- ESA – *Employment Standards Act, 2000*
- LRA – *Labour Relations Act, 1995*
- OHRC – *Human Rights Code*
- OHSA – *Occupational Health and Safety Act*
- PEA – *Pay Equity Act*
- WSIA – *Workplace Safety and Insurance Act, 1997*

### *Federal*

- CHRA – *Canadian Human Rights Act*
- CLC – *Canada Labour Code*
- PIPEDA – *Personal Information Protection and Electronic Documents Act*

The versions of the legislation were as accessed on June 19, 2018.

# Analysis

## Data Cleaning and Integrity Checks

Prometric provided data in .xml format via a secure ftp site. Candidate files were provided as candidates completed the examination throughout the testing window. These files were extracted to Microsoft Excel for processing. They contained identifying information for each candidate, form information, start and stop times, answer string, key string, candidate total score, item comments if the candidate made any, and time spent per item.

The data files received were reconciled against the roster provided by Prometric to ensure that all .xml files had been received. Further, each candidate total score as computed by Prometric was reconciled with that computed by Wickett for the full set of 110 items to verify key accuracy. Comments on items were also reviewed to identify any specific item-level issues. No problems were encountered.

The average time taken by all candidates was assessed to detect potential examination timing concerns. The distribution is shown in Figure 1. The mean was 3 hours, 1 minute (10 minutes more than in May 2018). The time limit on the CHRL ELE was 3½ hours, suggesting that time may have been a factor for at least some candidates.

Twenty-eight candidates (14%) took the full 3½ hours, suggesting that those candidates may have wanted more time. Ten candidates (5%) left at least one item blank, suggesting that those candidates timed out of the exam before being able to complete it. These metrics will continue to be monitored and are higher than what was observed at the May 2018 administration, but at present they do not appear problematically high. Note that because they have access to legislation, candidates may take more time than intended by researching more answers. This may skew time metrics higher.

The correlation between scores on the 110 items and time spent writing the examination was low at a value of .15, suggesting that the time constraints were not generally related to candidate performance. (Note that two candidates exceeded the time limit; these candidates were granted additional time in advance of the administration as an accommodation.)

Candidate scores were computed across the window to look for any evidence of item exposure. As shown in Figure 2, there was little variation across the window, and the difference between the first 3 days and the last 3 days was a negligible increase of 1.8 marks out of 110.

As a matter of interest, candidate volumes were also examined across the window; these are also shown in Figure 2. Though not psychometrically meaningful, there is a pattern for candidates to prefer to book at the end of window rather than at the start.



Figure 1: Examination time distribution for all candidates

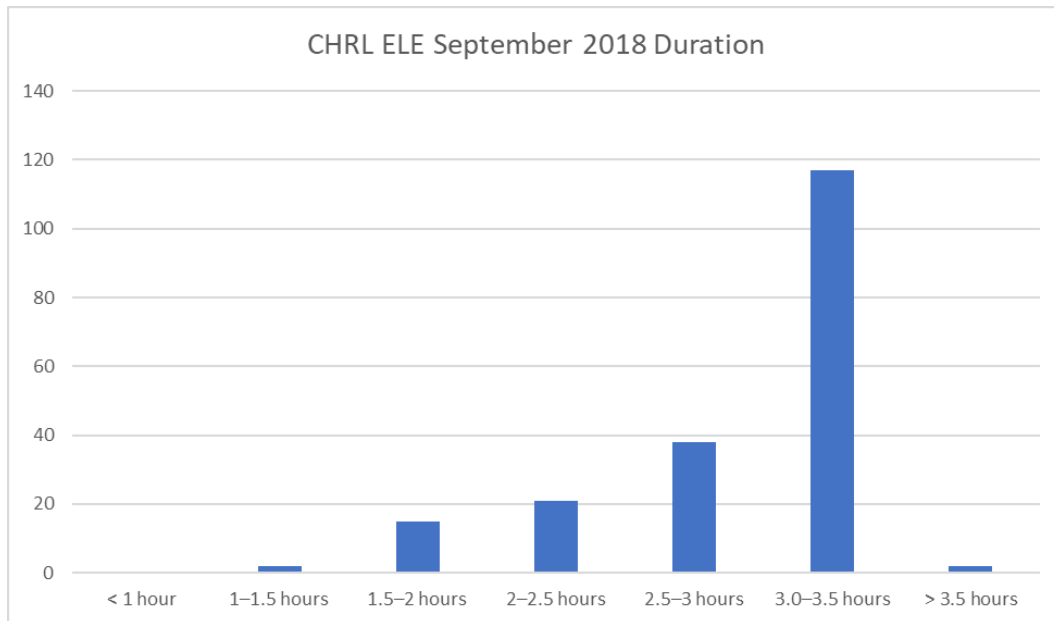
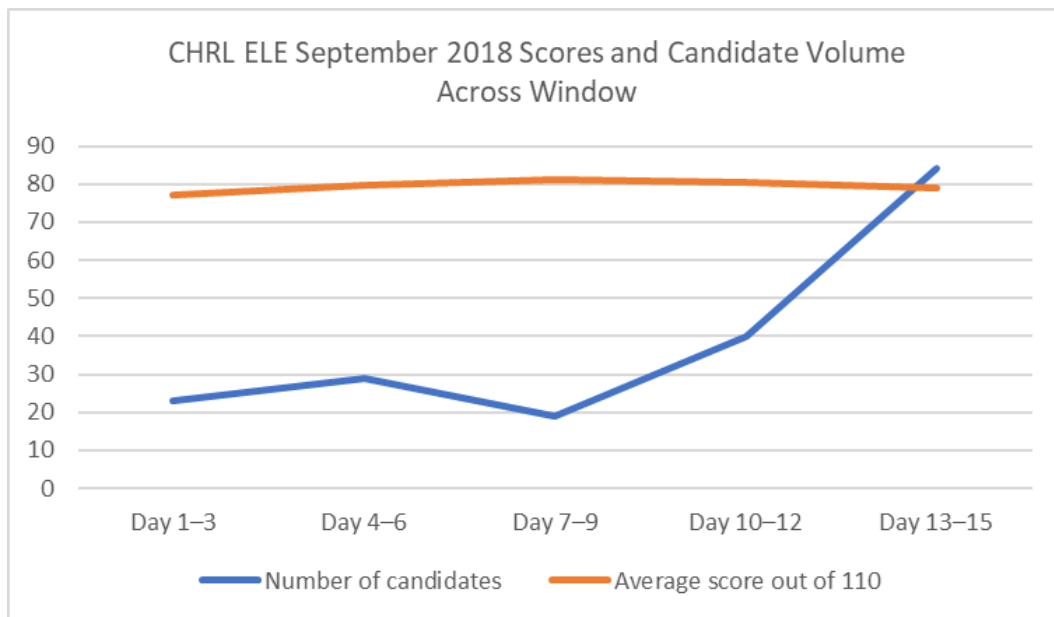


Figure 2: Candidate volume and score trends across testing window



After removing candidates who were administered a previously used test form (who were scored using the same decisions employed at the time that form was originally used), scores were calculated for all remaining candidates based on the full set of 110 items. No candidates were flagged for an abnormally low or high score (z value outside +/- 3.0). Also, the 110 items were arbitrarily broken into 4 blocks of 25 items for each candidate plus 1 final block of 10 items; the 5 resulting subscores for each candidate were evaluated for outliers as well. For candidates with any subscore more than 3 standard deviations (SD) from their average z-score, the .xml file

was examined closely for any issues. All outliers were removed from initial analyses; candidates with abnormal response patterns (such as having 5 or more blanks) were also removed. To be conservative, candidates who had been granted a testing accommodation were also removed from the main analysis (simply because their testing conditions were not the same as those of the main group of candidates, even though each accommodation was granted on the premise that it would make the testing experience equivalent in terms of opportunity to demonstrate competence). As a result of these factors, 4 candidates were removed from analyses.

Candidates who had failed a previous employment law examination (CHRP ELE or CHRL ELE) scored lower than did those who had not (73.2 and 80.4, respectively, on the full exam of 110 items). This difference was meaningful and significant ( $t(36)=5.40, p<.001$ ). In keeping with standard procedures, these candidates were removed from subsequent analyses. The CHRL ELE analysis proceeded with 166 candidates.

Owing to the modest number of candidates, all subsequent analyses were interpreted with caution.

## Post-Examination Survey

Candidates were provided access to the post-examination survey immediately after submitting their responses to the CHRL ELE; 189 candidates responded (response rate, 97%).

Table 3 shows the responses to the administration-related questions. Note that candidates were generally positive about the administration experience. Table 4 shows the content-related questions; there was a tendency to more neutrality on these questions.

Table 3: Administration-related post-examination survey questions\*

	Question	SA	A	N	D	SD	Score	Agreement
1.	I was able to book a seat to write the examination at a time that was convenient for me.	109	52	13	10	5	4.32	85%
2.	I was well informed about what documents to bring to the exam location.	138	43	7	2	0	4.67	95%
3.	Proctors enforced the exam-day rules and the security procedures at the test centre were what I expected.	149	38	2	1	0	4.76	98%
4.	Proctors were professional and courteous.	134	46	8	1	0	4.66	95%
5.	The tutorial helped me understand how to complete the examination on the computer.	109	66	10	2	0	4.51	94%
6.	The legislation and case texts were easy to access during the examination.	62	80	22	19	1	3.99	77%
7.	Navigation through the examination was easy and intuitive.	88	85	7	4	0	4.40	94%

\*Response categories: SA = Strongly Agree; A = Agree; N = Neutral; D = Disagree; SD = Strongly Disagree.

Table 4: Content-related post-examination survey questions\*

	Question	SA	A	N	D	SD	Score	Agreement
8.	The time allotted for this examination was sufficient.	56	79	16	23	10	3.80	73%
9.	Information available prior to exam day provided me with adequate details about the content and format of the exam.	36	84	33	26	5	3.65	65%
10.	I feel I was adequately prepared to write this examination.	23	94	48	14	4	3.64	64%
11.	The questions in the examination were clearly written.	19	89	48	24	4	3.52	59%
12.	The terminology used in the examination was accurate.	28	118	23	11	3	3.86	80%
13.	The situations presented in the examination were realistic.	47	113	22	1	1	4.11	87%
14.	The questions in the examination reflected the Employment Law Examination blueprint.	31	91	49	11	2	3.75	66%
15.	The examination was a fair assessment of my ability.	15	80	59	24	5	3.42	52%

\*Response categories: SA = Strongly Agree; A = Agree; N = Neutral; D = Disagree; SD = Strongly Disagree.

Candidates were asked their opinions regarding several structural variables; these results appear in Table 5 through Table 8. Candidates reported a modest preference for case-based items and a strong preference for 3-option multiple choice items. Most indicated that taking the test on a computer likely improved or had no effect on their performance. Most indicated that access to the legislation was necessary, whether they consulted it a few times or often.

**Table 5: Preference regarding independent and case-based items**

	<b>Count</b>	<b>%</b>
I preferred the independent items.	56	30%
I preferred the case-based items.	74	40%
I had no preference between independent and case-based items.	54	29%

**Table 6: Preference regarding number of response options**

	<b>Count</b>	<b>%</b>
I preferred having 3 options.	144	78%
I preferred having 4 options.	2	1%
It did not matter to me how many options were used.	38	21%

**Table 7: Preference regarding computer-based testing versus pencil-and-paper**

	<b>Count</b>	<b>%</b>
I feel that completing the examination on a computer improved my performance.	34	18%
I feel that completing the examination on a computer decreased my performance.	31	17%
I feel that completing the examination on a computer had no effect on my performance.	119	65%

**Table 8: Value of access to legislation**

	<b>Count</b>	<b>%</b>
Yes, it was essential to me in completing the examination.	62	34%
Yes, but I only consulted it a few times.	90	49%
No, I could not find the answers to questions I had.	20	11%
No, I did not need to consult it to complete the examination.	2	1%
No, it was more of a distraction than an aid.	10	5%

An open-ended question was also posed to candidates asking for any additional comments. Those comments were provided to HRP A for information and consideration. Nothing actionable with respect to scoring emerged in these comments.

## Initial Analysis

The full CHRL ELE examination was 110 items, of which approximately 100 were to be scored. The other 10 items were designated as experimental. However, because only 1 new form was administered, all items were potentially available for scoring and the focus of subsequent item analysis and key validation was on determining the best set of approximately 100 items that still reflected the examination blueprint.

The initial analysis summary statistics are presented in Table 9.

Table 9: Initial examination statistics

Index	CHRL ELE
Items	110
Total candidates	195
Candidates in analysis	166
Mean	80.4 (73.1%)
Range	61–95 (55.5–86.4%)
Standard deviation	7.55
Cronbach's alpha	.71
Disattenuated alpha	.86
Mean $r_{pb}^*$	.13

Standard classical test theory analysis was conducted to identify the following:

1. Item difficulty (percent obtaining correct result,  $p$ )
2. Item discrimination (corrected point-biserials,  $r_{pb}^*$ )
3. Distractor quality (based primarily on distractor discrimination)

Wickett compiled these statistics, along with any comments made by candidates concerning flagged items, to identify items that may have been keyed incorrectly or that were performing poorly. Most emphasis was placed on the corrected point-biserials as evidence of item quality. Items were ranked from worst performing to best performing accordingly.

## Key Validation

Key validation was conducted via web meeting on October 5, 2018, using members of the CHRL Examination Validation Committee (EVC). The group (Table 10) was first reminded of the methods used for key validation and was oriented to the main statistics used to evaluate the

quality of the CHRL ELE. Note that 4 members were planned for participation, but 1 had to miss due to another commitment.

Table 10: CHRL Examination Validation Committee – Key validation

Member	Credential	Years of Relevant Experience	Years on EVC	Industry
✓ Jennifer Borges	CHRL	10–14	1	Manufacturing
✓ Debbie Brandt	CHRL	10–14	1	Government and public centre agencies
Annette Dhanasar	CHRL	15–19	1	Transportation
✓ Christine Kelsey	CHRL	1–4	1	Entertainment
Jennifer King	CHRL	20–29	1	Business and professional services
Nancy Richard	CHRL	15–19	1	Regulation/Public sector
Kristin Rivait	CHRL	15–19	1	Health care
Lisa Scian	CHRL	15–19	1	Information & communication technology

✓ Participated in the session.

The group was informed that test reliability, as measured by Cronbach’s alpha, was .71 based on the set of 110 potentially scored items and that this was only marginally below the generally accepted threshold of .80. The group was advised that restriction of range was considered the most likely basis for the lower value. They were also informed that part of the goal of the key validation review was to bring this value up if possible.

The group was walked through the flagged items one at a time, with the recommendation that the worst-performing items be removed from scoring, but were given less direction on those with borderline statistics. Where available, candidates’ comments about the items were also shown. The group made decisions based on content and the data through discussion; they removed 11 items that they felt were least appropriate to retain for scoring. Panel members’ comments about specific items were recorded for future item revision activities.

Not all remaining items were strong-performing, and several items were retained that were very easy or very hard or that had a low corrected point-biserial. Most were moderate to strong items, however. The final alpha for the set of 99 scored items was .75. The difficulties ranged from 19.3% to 99.4%, with a mean of 74.2%. The  $r_{pb}^*$  values ranged from  $-.08$  to  $.39$ , with a mean of  $.15$ .

Table 11 shows the scored CHRL ELE’s final fit to the domain weighting. Table 12 shows the same for cognitive level, and Table 13 shows the same for item type. The exam fit on all dimensions.

The group endorsed the final set of items for use in scoring the September 2018 CHRL ELE candidates.

Table 11: Domain fit for final scored items

Domain	Actual Items	Target Range	Target Items	Variance
A Employment Contracts and Terminations	46	46% ± 5%	41–50	—
B Employer Obligations	31	33% ± 4%	29–36	—
C Regulations and Legislation	22	21% ± 3%	18–23	—
<b>TOTAL</b>	<b>99</b>		<b>99</b>	<b>—</b>

Table 12: Cognitive level fit for final scored items

Cognitive Level	Actual Items	Target Range	Target Items	Variance
Knowledge	11	10% ± 3%	7–12	—
Application	48	50% ± 10%	40–59	—
Critical thinking	40	40% ± 10%	30–49	—
<b>TOTAL</b>	<b>99</b>		<b>99</b>	<b>—</b>

Table 13: Item type fit for final scored items

Item Type	Actual Items	Target Range	Target Items	Variance
Independent	27	25% ± 3%	22–27	—
Case	72	75% ± 3%	72–77	—
<b>TOTAL</b>	<b>99</b>		<b>99</b>	<b>—</b>

## Establishing the Pass Mark: Equating

Equating, as per Kolen and Brennan (2014),<sup>5</sup> was used to establish the pass mark for the September 2018 CHRL ELE. The goal of this process was to set a pass mark for the September 2018 CHRL ELE that would be equivalent to that set for the May and January 2018 CHRL ELE; that is, to set a pass mark that would give each candidate the same probability of passing regardless of which form they took.

<sup>5</sup> Kolen, M.J., & Brennan, R.L. (2014). *Test equating, scaling, and linking*. New York, NY: Springer.

The passing standard for the CHRL ELE was last set after the January 2018 offering of the CHRL ELE using the Modified Angoff and Bookmark methods. Specific information on the standard-setting session is provided in the Technical Report issued for the January 2018 administration.

Two equating procedures were conducted back to different administrations (January 2018 and May 2018). The intention following these 2 equating runs was to average them to arrive at a final pass mark for the September 2018 CHRL ELE. These administrations were chosen because they were the only administrations under the new standard set for January 2018.

### Equating Back to the May 2018 Administration

Multiple equating methods were considered for setting the pass mark and these analyses were conducted once key validation was complete. Linear equating was the primary method under considering owing to both samples having more than 100 candidates; equipercentile equating would have been considered with more than 1,000 candidates. With candidate samples of fewer than 100, mean or circle arc equating is most prudent.

All candidates in the analysis (i.e., no repeat candidates or outliers) were used in the equating process. Delta-plot analysis was used to identify anchor items showing substantial deviations (generally, although not exclusively, greater than 3 *SD* units) from expected difficulty values, with an emphasis on establishing an anchor set with difficulty equivalent to that of the full form that adhered to the blueprint. Further, items with very high or low difficulty values and those with low corrected point-biserials were also flagged for potential removal from the anchor set. The goal was a strong midi-test (i.e., moderate range of difficulty, moderate to high discrimination, fit to blueprint) of sufficient length to estimate candidate ability.

The selected set of anchor items had a mean difficulty of 0.76 and a mean corrected point-biserial of .20.

Table 14 shows the fit of the set of anchor items to the blueprint, as percentages. The actual counts are reasonably aligned with the targets and reflect the scope and approximate weighting across the full exam.

Table 14: Anchor item fit to blueprint

	Area	Actual	Target
<b>A</b>	Employment Contracts and Terminations	53%	46%
<b>B</b>	Employer Obligations	30%	33%
<b>C</b>	Regulations and Legislation	17%	21%

The mean, Tucker, Levine observed-score, circle arc, and Braun-Holland methods were computed to ascertain concordance of solutions. Given the sample sizes and similarities of test parameters, both the Tucker and Levine observed-score methods were considered the primary method. The strong difference in variance and anchor set performance pushed toward the



selection of Levine observed-score as the method of choice, but the estimate of equating error was less with Tucker.

Table 15 shows some of the parameters used to derive the equating estimates, along with other parameters describing the test forms. Of note is that on the anchor items, the population taking the September 2018 CHRL ELE scored higher than the population taking the May 2018 CHRL ELE (75.9% vs. 72.6%, respectively;  $t(297)=2.32$ ,  $p<.05$ ). Because the September 2018 CHRL ELE candidates were of higher ability (based on the anchors), they should have a higher pass rate.

The equating analysis bears this out (Table 16). All methods show a pass mark of 63 or 64, which leads to an increase in pass rate for first time candidates of 87% or 90%. Given the sample sizes involved, Tucker or Levine observed-score would be the primary methods under consideration. The Tucker method showed the lowest estimated equating error and would be chosen as marginally preferable over Levine observed-score, but the marked difference between those two solutions are cause for considering the additional information provided in the next equating analysis first.

Table 15: Equating parameter table

		May 2018	Sep. 2018
N		133	166
Scored items		100	99
Mean score	Total	71.5%	73.4%
	Anchors	72.6%	75.9%

Table 16: Equating outcome table

Method	Pass Mark		Pass Rate	
	Precise	Integer	All	First Time
Equating May 2018	62.3453	63	78.0%	82.7%
Tucker	63.3819	64	85.6%	87.3%
Levine observed	62.0602	63	88.7%	89.8%
Mean	62.31	63	88.7%	89.8%
Circle Arc 1	62.25	63	88.7%	89.8%
Circle Arc 2	62.25	63	88.7%	89.8%
Braun-Holland	63.67	64	85.6%	87.3%

## Equating Back to the January 2018 Administration

Multiple equating methods were considered for setting the pass mark and these analyses were conducted once key validation was complete. Linear equating was the primary method under considering owing to both samples having more than 100 candidates; equipercentile equating would have been considered with more than 1,000 candidates. With candidate samples of fewer than 100, mean or circle arc equating is most prudent.

All candidates in the analysis (i.e., no repeat candidates or outliers) were used in the equating process. Delta-plot analysis was used to identify anchor items showing substantial deviations (generally, although not exclusively, greater than 3 *SD* units) from expected difficulty values, with an emphasis on establishing an anchor set with difficulty equivalent to that of the full form that adhered to the blueprint. Further, items with very high or low difficulty values and those with low corrected point-biserials were also flagged for potential removal from the anchor set. The goal was a strong midi-test (i.e., moderate range of difficulty, moderate to high discrimination, fit to blueprint) of sufficient length to estimate candidate ability.

The selected set of anchor items had a mean difficulty of 0.74 and a mean corrected point-biserial of .19.

Table 17 shows the fit of the set of anchor items to the blueprint, as percentages. The actual counts are closely aligned with the targets and reflect the scope and approximate weighting across the full exam.

Table 17: Anchor item fit to blueprint

Area	Actual	Target
<b>A</b> Employment Contracts and Terminations	47%	46%
<b>B</b> Employer Obligations	30%	33%
<b>C</b> Regulations and Legislation	23%	21%

The mean, Tucker, Levine observed-score, circle arc, and Braun-Holland methods were computed to ascertain concordance of solutions. Given the sample sizes and similarities of test parameters, Tucker was considered the primary method.

Table 18 shows some of the parameters used to derive the equating estimates, along with other parameters describing the test forms. Of note is that on the anchor items, the population taking the September 2018 CHRP ELE scored essentially the same as the population taking the January 2018 CHRP ELE (74.0% vs. 73.9%, respectively;  $t(348)=0.11$ , *ns*). Because the September 2018 CHRL ELE candidates were of the same ability (based on the anchors), they should have the same pass rate.

The equating analysis bears this out (Table 19). All methods indicate a pass mark of 64. Given the sample sizes involved, Tucker or Levine observed would be the primary methods under consideration. The Tucker method showed the lowest estimated equating error and would be

chosen based on general rules of thumb for deciding between the Tucker and Levine observed methods.

Table 18: Equating parameter table

		Jan. 2018	Sep. 2018
n		184	166
Scored items		98	99
Mean score	Total	72.6%	74.2%
	Anchors	73.9%	74.0%

Table 19: Equating outcome table

Method	Pass Mark		Pass Rate	
	Precise	Integer	All	First Time
Ang/Book Jan 2018	61.2361	62	78.0%	82.7%
Tucker	63.8587	64	85.6%	87.3%
Levine observed	63.86	64	85.6%	87.3%
Mean	63.41	64	85.6%	87.3%
Circle arc 1	63.29	64	85.6%	87.3%
Circle arc 2	63.27	64	85.6%	87.3%
Braun-Holland	63.88	64	85.6%	87.3%

## Combined Results

Table 20 shows the pass mark values across the 2 equating runs. The value highlighted in green is the one that would be selected based on sample parameters at each equating run. Note that for equating to the May 2018 administration, two values are supportable.

Though the usual procedure is to average the two preferred methods across the two equating runs, in this instance a different decision was recommended for the following reasons:

- The January 2018 equating shows greater consistency across equating methods
- The January 2018 candidates performed more closely to the September candidates, and the test form statistics were more similar.
- There were more candidates writing in January than in May 2018.
- The Tucker and Levine observed-score methods differ by more than a full score point in the May 2018 equating.

For these reasons, it was recommended that the CHRL EVC adopt the Tucker result from the January 2018 equating only, and not make use of the May 2018 analysis. Most reasonable methods of combining the results across both sets of analyses would still result in a pass mark of 64, and so this recommendation was mostly relevant to establishing a precise value for use in future equating. Further, the May 2018 equating results were generally consistent with the January 2018 equating results, and so the recommendation to not attend to it does not misrepresent a meaningful difference in the analyses. The lower Levine observed-score value in the May 2018 equating run appears to be more of an aberration due to sample parameter fluctuations than the most reflective result to be used in establishing a fair and valid pass mark.

Using the established convention for this testing program, the Tucker pass mark would be rounded up to a cut score of 64. The resulting pass rate for first-time candidates (87.3%) is about the same as that observed for the January 2018 CHRL ELE. The pass rate for all candidates (85.6%) was also very similar to that seen in January 2018. Both values were up substantially over the May 2018 administration. See Table 21 for historical pass rates.

The final pass mark value, and the process used to derive it, was presented to the CHRP EVC (Table 22) via teleconference on October 12, 2018. No concerns were raised regarding the pass mark or pass rate, nor regarding the method used to finalize the value. The panel formally approved the pass mark (which was presented along with the consequent pass rate data) for recommendation to HRP. The HRP Registrar subsequently accepted the panel's recommendation.

Table 20: Equating outcome table – Combined results

	Jan. 18	May 18
Tucker	63.9	63.4
Levine observed	63.9	62.1
Mean	63.4	62.3
Circle arc 1	63.3	62.3
Circle arc 2	63.3	62.3
Braun-Holland	63.9	63.7

Table 21: Historical pass rates

	Pass rate	
	All	First-time
Sep. 2016	79.9%	
Jan. 2017	81.1%	85.2%
May	90.7%	91.2%
Sep.	88.8%	91.0%
Jan. 2018	86.1%	88.6%
May	78.0%	82.7%
Sep.	<b>85.6%</b>	<b>87.3%</b>

Table 22: CHRL Examination Validation Committee – Pass mark approval

Member	Credential	Years of Relevant Experience	Years on EVC	Industry
Jennifer Borges	CHRL	10–14	1	Manufacturing
Debbie Brandt	CHRL	10–14	1	Government and public centre agencies
✓ Annette Dhanasar	CHRL	15–19	1	Transportation
✓ Christine Kelsey	CHRL	1–4	1	Entertainment
Jennifer King	CHRL	20–29	1	Business and professional services
✓ Nancy Richard	CHRL	15–19	1	Regulation/Public sector
Kristin Rivait	CHRL	15–19	1	Health care
✓ Lisa Scian	CHRL	15–19	1	Information & communication technology

✓ Participated in the session.

## Scoring

To finalize the scoring, candidates who were not included in the item and form analyses were reinserted into the dataset. Scores for each of the 3 domain areas were also computed for each candidate. An Excel file with the final candidate results was provided to HRP.

Table 23 provides the means and standard deviations for the domains and for the total score, using all candidates who took the September 2018 CHRL ELE. Table 24 provides the correlations between each domain. Caution should be exercised in interpreting differences between correlations. Variation can be explained largely by the number of items making up

each domain score. That is, domain C has fewer items and shows lower correlations with the other domains. Figure 3 shows the distribution of scores for all candidates, along with the pass mark.

Table 23: Total and domain scores for all candidates

Domain	Percentage	Mean	SD*
A Employment Contracts and Terminations	71%	32.7	4.3
B Employer Obligations	79%	24.5	2.5
C Regulations and Legislation	70%	15.3	2.6
<b>Total score</b>	<b>73.2%</b>	<b>72.5</b>	<b>7.7</b>

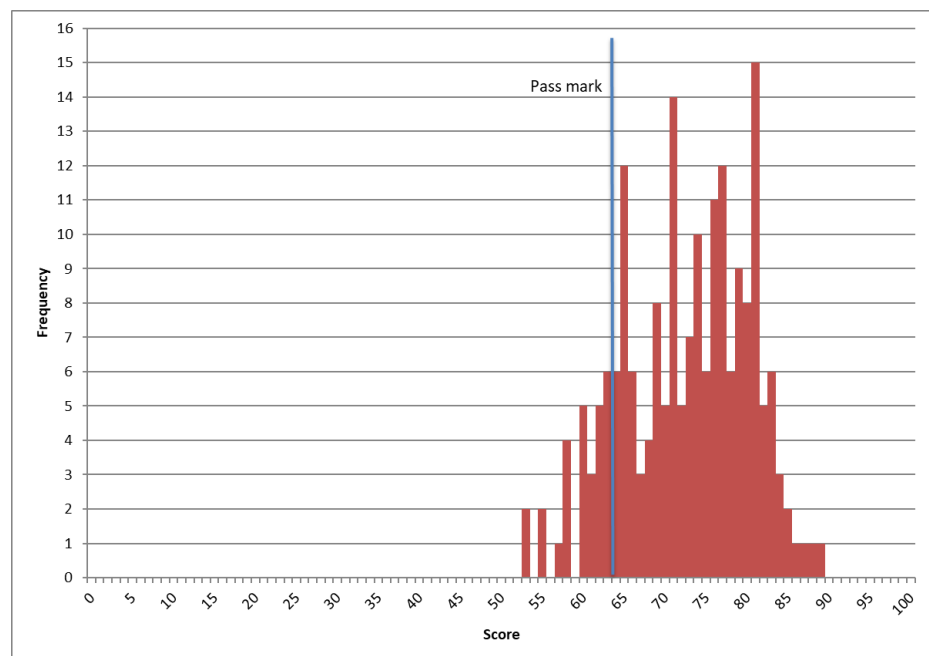
\*SD = Standard deviation.

Table 24: Correlations between functional area scores for all candidates

Domain*	A	B	C
A		.53	.54
B			.37
C			

\*See Table 23 for the full name of each functional area.

Figure 3: Score distribution for all candidates



## Key Examination Metrics

Table 25 shows the key examination metrics for candidates included in the main analysis; that is, only first-time candidates, with outliers removed. Past metrics are provided for reference.

Note that January 2017 was the first computer-based testing delivery of the CHRL ELE. In 2018 the time limit for candidates was increased from 3 hours to 3½ hours.

Table 25: Key examination metrics – Candidates included in analysis only

Index	September 2018	May 2018	January 2018	September 2017	May 2017
Scored items	99	100	98	100	98
Candidates	166	133	184	144	136
Mean	73.45 (74.19%)	71.49 (71.49%)	71.20 (72.6%)	71.67 (71.7%)	66.93 (68.3%)
Median	75 (75.8%)	71 (71.0%)	72 (73.5%)	71 (71.0%)	67 (68.4%)
Skewness	-0.435	-0.019	-0.422	-0.319	-0.081
Kurtosis	-0.590	-0.653	-0.057	0.018	-0.052
Range	53–89 (53.5– 89.9%)	50–91 (50.0– 91.0%)	46–89 (46.9– 90.8%)	41–94 (41.0– 94.0%)	42–90 (42.9– 91.8%)
Standard deviation	7.66	9.36	7.99	9.76	8.40
Cronbach's alpha	.75	.81	.76	.82	.76
Mean $r_{pb}^*$	.15	.18	.15	.19	.15
SEM <sup>i</sup>	3.86	4.05	3.95	4.11	4.14
SEM at the pass mark	4.28	4.45	4.36	4.60	4.49
Decision consistency (uncorrected) <sup>ii</sup>	.88	.86	.87	.90	.88
Perceived fairness <sup>iii</sup>	52%	56%	57%	58%	47%
Pass mark	63.859	62.345	61.236	59.077	55.678
Effective pass mark	64	63	62	60	56
Pass rate	87.3%	82.7%	88.6%	91.0%	91.2%

<sup>i</sup>SEM = standard error of measurement.

<sup>ii</sup>Subkoviac method.

<sup>iii</sup>Based on responses to the post-examination survey for all candidates.

## **Related Development Activities**

No development activities were conducted for the CHRL ELE since the last administration of the CHRL ELE in May 2018.



# Appendix

## Blueprint

### CHRL Employment Law Examination Blueprint

Human Resources Professionals Association

*Version 2.0*

*Approved by CHRL Exam Validation Committee March 13, 2018*

*Approved by HRP A Registrar March 14, 2018*

*Effective September 2018 administration*

### Credential

Passing the CHRL Employment Law Examination is a requirement for certification of CHRL candidates.

### Purpose

The CHRL ELE assesses whether a candidate has the ability to make effective decisions when presented with HR situations where comprehension of laws and regulations is centrally relevant, at the CHRL level, in Ontario.

### Structure

The structural variables provide high level guidance as to what the examination will look like. These appear in Table 26.

**Table 26: Employment Law Examination Blueprint Structural Variables**

Item types	75% Case-based 3-option multiple choice (15-20 single scenarios tied to 4-6 test items each)
	25% Independent 3-option multiple choice
Length	110 total items
	8–12 experimental items
Duration	Up to 3½ hours
Delivery mode	Computer based testing in proctored test centres
Frequency	3 windows per year

### Content Weighting

The topic weights were set through a survey of employment lawyers on the most typical situations where employment-related issues are escalated to legal proceedings.

Categories are:

- A. Employment Contracts
- B. Employer Obligations
- C. Regulations and Legislation

Within each Category, the Topics are:

- A. Employment Contracts
  - A1 Termination
  - A2 Contracts
  - A3 Employee Benefits and Perquisites
- B. Employer Obligations
  - B1 Duty to Accommodate
  - B2 Misconduct in the Workplace
  - B3 Common Law
  - B4 Sale of Business
- C. Regulations and Legislation
  - C1 Employment Standards Act
  - C2 Occupational Health and Safety Act
  - C3 Jurisdiction
  - C4 Pay Equity Act
  - C5 Canada Labour Code

The full blueprinted list of Categories, Topics and Subtopics, along with their weighting, appears in Table 27.

Table 27: Employment Law Examination Blueprint Content Weights

Category Weight	Topic Weight	Topic	Subtopic Weight
46%	<b>A. Employment Contracts and Terminations</b>		
	28%	<b>A1. Termination</b>	
		A1.1 Termination with or without cause	8%
		A1.2 Termination pay, termination notice, and pay in lieu of notice	6%
		A1.3 Continuation of benefits to employee after termination	5%
		A1.4 Severance pay entitlements	5%
		A1.5 What type of income is considered part of terminated employee's salary	2%
		A1.6 Whether or not it is legal to lay off an employee	1%
	A1.7 When and how to lay off an employee	1%	
	11%	<b>A2. Contracts</b>	
		A2.1 Contracts and employment agreements	9%
	A2.2 Collective bargaining contracts	2%	
	7%	<b>A3. Employee Benefits and Perquisites</b>	
		A3.1 Vacation time, vacation pay and bonuses	5%
A3.2 Overtime exemptions		2%	
33%	<b>B. Employer Obligations</b>		
	16%	<b>B1. Duty to Accommodate</b>	
		B1.1 Mental health or physical disabilities	9%
		B1.2 Discriminatory grounds (such as family status, age, marital status, etc.)	5%
	B1.3 The duty to accommodate until undue hardship (the threshold)	2%	
	9%	<b>B2. Misconduct in the Workplace</b>	
		B2.1 Dealing with harassment and violence in the workplace	5%
		B2.2 HR professional approach to dealing with discipline	2%
	B2.3 Workplace investigations	2%	
	6%	<b>B3. Common Law</b>	
		B3.1 Including consideration of Common Law principles	5%
	B3.2 Employers' obligations under Common Law	1%	
	2%	<b>B4. Sale of Business</b>	
B4.1 The effects of the sale of the business	2%		
21%	<b>C. Regulations and Legislation</b>		
	10%	<b>C1. Employment Standards Act</b>	
		C1.1 How to properly interpret the <i>Employment Standards Act, 2000</i>	5%
C1.2 Probation period under <i>Employment Standards Act, 2000</i>	2%		

	C1.3 Different leaves permitted under the <i>Employment Standards Act, 2000</i>	2%
	C1.4 Employers' obligations under <i>Employment Standards Act, 2000</i>	1%
<b>4%</b>	<b>C2. Occupational Health and Safety Act</b>	
	C2.1 Making policies that are compliant with the <i>Occupational Health and Safety Act, 1990</i>	2%
	C2.2 Ministry of Labour's rights under the <i>Occupational Health and Safety Act, 1990</i>	2%
<b>4%</b>	<b>C3. Jurisdiction</b>	
	C3.1 The difference between federal and provincial legislations	2%
	C3.2 Determining governing legislation when the organization is interprovincial	2%
<b>2%</b>	<b>C4. Pay Equity Act</b>	
	C4.1 Application of <i>Pay Equity Act, 1990</i>	2%
<b>1%</b>	<b>C5. Canada Labour Code</b>	
	C5.1 Employers' obligations under <i>Canada Labour Code, 1985</i>	1%

Note: Reasonable ranges around the Topic weights are employed.

## Cognitive Level

The cognitive level weights are based on Bloom's taxonomy. The purpose of this weighting is generally to ensure that an examination does not unintentionally over-focus on specific types of items, and to provide candidates with a range of items (in approximate proportion) that reflects the cognitive operations they must apply on the job. The weights appear in Table 28.

Table 28: CHRL Employment Law Examination Blueprint Cognitive Level Weights

Level	Weight	Range
Knowledge	10%	+/- 3%
Application	50%	+/- 10%
Critical Thinking	40%	+/- 10%

## Miscellaneous Guidance

Guidance is not considered binding on the examination, but is used in item development and form development to help create balanced forms.

1. Where scenarios or test items include a workplace, the workplace allocation will be as follows:
  - a. For profit enterprise, 60% (+/- 10%)
  - b. Government, 20% (+/- 5%)
  - c. Not-for-profit, 20% (+/- 5%)
2. 20% (+/- 10%) of workplaces mentioned in scenarios and test items will be unionized.

3. 10% (+/- 5%) of employers mentioned in scenarios and test items will have physical locations in more than one Canadian province.
4. 10% (+/- 5%) of employers mentioned in scenarios and test items will have physical locations both inside and outside of Canada.